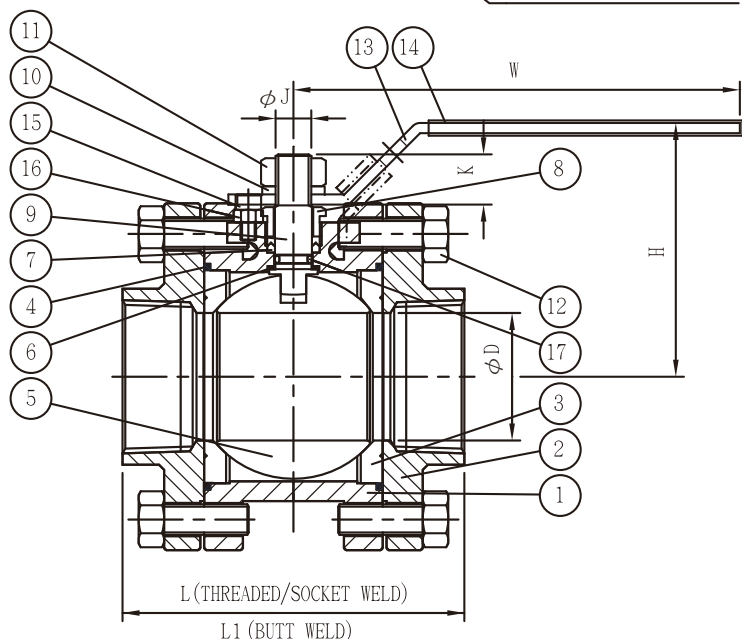
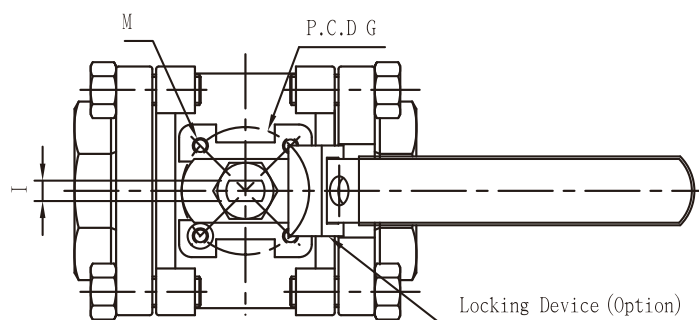


3-PIECE FULL PORT BALL VALVES

**FIG. S-332T / C-332T: THREADED ENDS, 1/4" TO 2": 2000 PSI (138 BAR) W.O.G.,
2 1/2" TO 3": 1500 PSI (103 BAR) W.O.G., ISO 5211 MOUNTING PAD.**

FEATURES:

- Three-piece design for fast, economical in-line maintenance.
- Strengthened construction secures 2000 psi working pressure rating.
- Reinforced TFE seats increase durability.
- Adjustable packing gland.
- Bottom-loaded blow-out proof stem.
- Low operating torque to reduce automation costs.
- Mounting pad complied with ISO 5211 for ease and interchangeability of actuation.
- Basic design complied with ANSI B16.34 & EN 12516-1.
- NPT threaded ends complied with ANSI B 1.20.1.
- Rc, Rp & G Threaded ends complied with BS 21/2779, JIS B-0203/0202, DIN 259/2999, ISO 228-1, AS1722.1/1722.2 are upon request.
- Tested according to API 598.



MATERIALS LIST:

NO.	PARTS	S-332T/S/B	C-332T/S/B
1	BODY	ASTM A351-CF8M	ASTM A216-WCB
2	END CAP	ASTM A351-CF8M	ASTM A216-WCB
3	SEAT	R.TFE	R.TFE
4	GASKET	PTFE	PTFE
5	BALL	ASTM A351-CF8M/316	ASTM A351-CF8/304
6	THRUST WASHER	PTFE	PTFE
7	STEM PACKING	PTFE	PTFE
8	GLAND	AISI 304	AISI 304
9	STEM	ASTM A276-316	ASTM A276-304
10	HANDLE WASHER	AISI 304	AISI 304
11	HANDLE NUT	AISI 304	AISI 304
12	CAP SCREW	AISI 304	CARBON STEEL
13	HANDLE	AISI 304	ZINC PLATED STEEL
14	HANDLE COVER	PVC	PVC
15	STOP SCREW	AISI 304	CARBON STEEL
16	NUT	AISI 304	CARBON STEEL
17	O-RING	VITON	VITON

OPTIONS:

- L: LOCKING DEVICE.
- V: VENTED BALL.
- P: EQUIPPED WITH PNEUMATIC ACTUATOR.

DIMENSIONS:

SIZE	ØD	L	L1	I	ØJ	K	ØG	M	H	W										
1/4"	8	0.41	10.5	2.56	65	2.56	65	0.20	5	0.31	8	0.35	9	1.42	36	M5	2.17	55	5.31	135
3/8"	10	0.49	12.5	2.56	65	2.56	65	0.20	5	0.31	8	0.35	9	1.42	36	M5	2.17	55	5.31	135
1/2"	15	0.59	15	2.76	70	2.80	71	0.20	5	0.31	8	0.45	11.5	1.42	36	M5	2.35	59.8	5.31	135
3/4"	20	0.79	20	3.15	80	3.23	82	0.24	6	0.39	10	0.59	15	1.42	36	M5	2.46	62.5	5.31	135
1"	25	1.00	25	3.54	90	3.62	92	0.31	8	0.47	12	0.63	16	1.65	42	M5	2.72	69	6.50	165
1 1/4"	32	1.26	32	4.13	105	4.33	110	0.31	8	0.47	12	0.63	16	1.65	42	M5	3.09	78.5	6.50	165
1 1/2"	40	1.50	38	4.72	120	5.00	127	0.31	8	0.55	14	0.79	20	1.97	50	M6	3.59	91.3	6.89	175
2"	50	1.97	50	5.28	134	5.91	150	0.31	8	0.55	14	0.79	20	1.97	50	M6	3.96	100.5	6.89	175
2 1/2"	65	2.56	65	6.50	165	7.20	183	0.47	12	0.75	19.05	1.14	29	2.76	70	M8	5.06	128.5	9.57	243
3"	80	3.15	80	7.28	185	8.27	210	0.47	12	0.75	19.05	1.14	29	2.76	70	M8	5.47	139	9.57	243

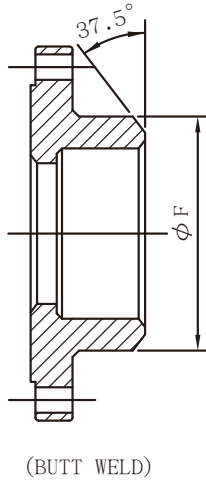
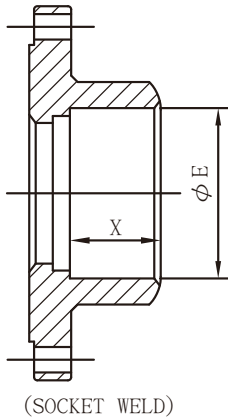
We reserve the rights to modify our product design or construction for improvement without prior notice.

3-PIECE FULL PORT BALL VALVES

FIG. S-332S/C-332S: WITH SOCKET WELD ENDS COMPLIED WITH ANSI B 16.11.
FIG. S-332B/C-332B: WITH BUTT WELD ENDS COMPLIED WITH ANSI B 16.25.

FEATURES:

- Three-piece design for fast, economical in-line maintenance.
- Strengthened construction secures 2000 psi working pressure rating.
- Reinforced TFE seats increase durability.
- Adjustable packing gland. Bottom-loaded blow-out proof stem.
- Low operating torque to reduce automation costs.
- Mounting pad complied with ISO 5211 for ease and interchangeability of actuation.
- Basic design complied with ANSI B16.34 & EN 12516-1.
- Tested according to API 598.



MATERIALS LIST:

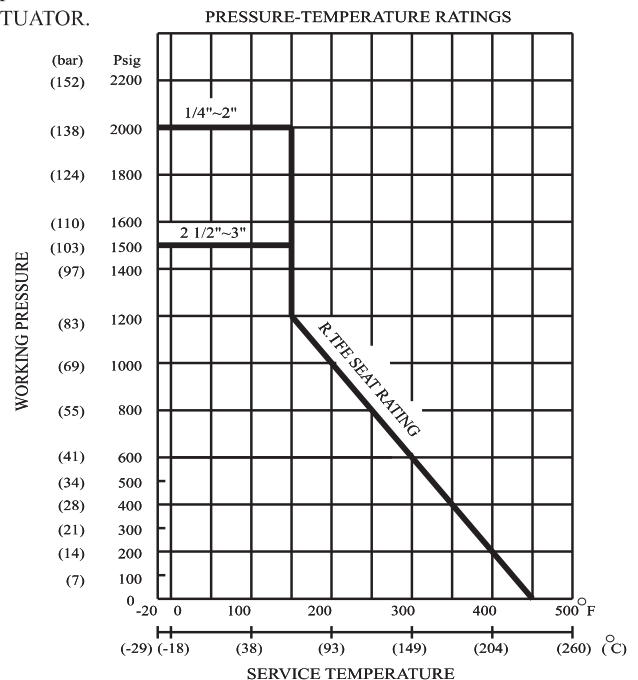
NO.	PARTS	S-332T/S/B	C-332T/S/B
1	BODY	ASTM A351-CF8M	ASTM A216-WCB
2	END CAP	ASTM A351-CF8M	ASTM A216-WCB
3	SEAT	R.TFE	R.TFE
4	GASKET	PTFE	PTFE
5	BALL	ASTM A351-CF8M/316	ASTM A351-CF8/304
6	THRUST WASHER	PTFE	PTFE
7	STEM PACKING	PTFE	PTFE
8	GLAND	AISI 304	AISI 304
9	STEM	ASTM A276-316	ASTM A276-304
10	HANDLE WASHER	AISI 304	AISI 304
11	HANDLE NUT	AISI 304	AISI 304
12	CAP SCREW	AISI 304	CARBON STEEL
13	HANDLE	AISI 304	ZINC PLATED STEEL
14	HANDLE COVER	PVC	PVC
15	STOP SCREW	AISI 304	CARBON STEEL
16	NUT	AISI 304	CARBON STEEL
17	O-RING	VITON	VITON

OPTIONS:

- L: LOCKING DEVICE.
- V: VENTED BALL.
- P: EQUIPPED WITH PNEUMATIC ACTUATOR.

DIMENSIONS

SIZE		ϕE		X		ϕF	
in	DN	in	mm	in	mm	in	mm
1/4"	8	0.555	14.2	0.39	10	0.57	14.6
3/8"	10	0.690	17.6	0.39	10	0.72	18.3
1/2"	15	0.855	21.8	0.51	13	0.88	22.4
3/4"	20	1.065	27.2	0.59	15	1.09	27.8
1"	25	1.330	33.9	0.59	15	1.37	34.7
1 1/4"	32	1.675	42.7	0.59	15	1.70	43.3
1 1/2"	40	1.915	48.8	0.63	16	1.94	49.3
2"	50	2.406	61.2	0.67	17	2.42	61.4
2 1/2"	65	2.906	73.9	0.67	17	2.95	75
3"	80	3.535	89.8	0.67	17	3.54	90



We reserve the rights to modify our product design or construction for improvement without prior notice.